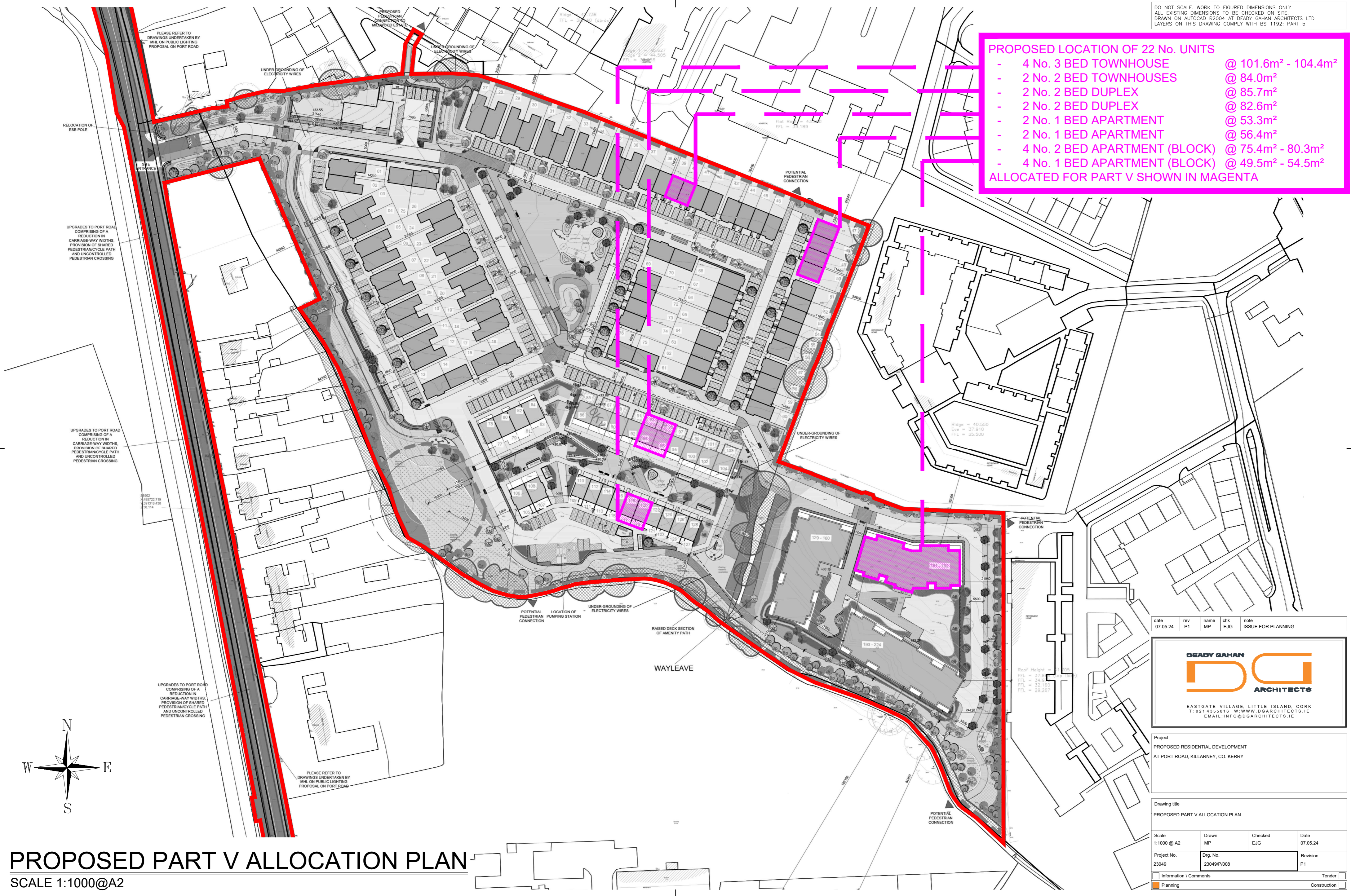


DO NOT SCALE. WORK TO FIGURED DIMENSIONS ONLY.
 ALL EXISTING DIMENSIONS TO BE CHECKED ON SITE.
 DRAWN ON AUTOCAD R2004 AT DEADY GAHAN ARCHITECTS LTD
 LAYERS ON THIS DRAWING COMPLY WITH BS 1192: PART 5

- PROPOSED LOCATION OF 22 No. UNITS**
- 4 No. 3 BED TOWNHOUSE @ 101.6m² - 104.4m²
 - 2 No. 2 BED TOWNHOUSES @ 84.0m²
 - 2 No. 2 BED DUPLEX @ 85.7m²
 - 2 No. 2 BED DUPLEX @ 82.6m²
 - 2 No. 1 BED APARTMENT @ 53.3m²
 - 2 No. 1 BED APARTMENT @ 56.4m²
 - 4 No. 2 BED APARTMENT (BLOCK) @ 75.4m² - 80.3m²
 - 4 No. 1 BED APARTMENT (BLOCK) @ 49.5m² - 54.5m²
- ALLOCATED FOR PART V SHOWN IN MAGENTA



PROPOSED PART V ALLOCATION PLAN

SCALE 1:1000@A2

date	rev	name	chk	note
07.05.24	P1	MP	EJG	ISSUE FOR PLANNING

DEADY GAHAN ARCHITECTS

EASTGATE VILLAGE, LITTLE ISLAND, CORK
 T: 021 4355016 W: WWW.DGARCHITECTS.IE
 EMAIL: INFO@DGARCHITECTS.IE

Project
 PROPOSED RESIDENTIAL DEVELOPMENT
 AT PORT ROAD, KILLARNEY, CO. KERRY

Drawing title PROPOSED PART V ALLOCATION PLAN			
Scale 1:1000 @ A2	Drawn MP	Checked EJG	Date 07.05.24
Project No. 23049	Drg. No. 23049/P/008	Revision P1	
Information \ Comments			Tender
Planning			Construction